

Standard Product Range

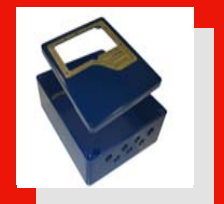


One Stop Solutions May 2008



- Contract manufacture and assembly of Switches, Sensors & Enclosures
- Electro Mechanical Assemblies
- Cable Assemblies
- Cable Harnesses

- Working together.....
- A Total Solution Resource



Bernstein Ltd
Unit One, Tintagel Way
Westgate, Aldridge
West Midlands, WS9 8ER
Tel: 01922 744999
Fax: 01922 457555
Email: sales@bernstein-ltd.co.uk
Web: www.bernstein-ltd.co.uk

Sensors

Inductive sensors

- Globaline
- Programmable sensors
- Cylindrical housing Ø3, Ø4, Ø6,5
- Extended sensing distance
- Thread housing M4, M5, M8, M12, M18, M30
- Extended temp range -40°C to +100°C
- Metal Rectangular housings 5x5x25, 8x8x40, 8x8x47, 12x12x55
- Special purpose design
- Plastic Rectangular housing 27x10x5, 28x16x11, 40x26x12, 50x25x10
- ATEX approved
- Multinorm 120x40x40
- Ultra-lock connection system

Electro-mechanical & Electronic Magnetic switches

- Cylindrical housing
- Rectangular housing
- Rectangular housing
- ATEX approved magnet switch for non-contact position detection
- Threaded housing
- Tailor-made solutions

Photo-electric sensors

- Threaded housings M12, M18, M30
- Rectangular housing 88x63x24
- Cylindrical housing Ø20
- Rectangular housing 85x50x23
- Rectangular housing 30x30x15
- Multinorm 120x40x40
- Rectangular housings 12x12x55, 12x12x65
- Analog output sensors

Capacitive sensors

- M12, M18, M30, M32 (available with metal housing)
- 50x25x10, 68x30x15
- Cylindrical housing Ø20, Ø34
- Multinorm 120x40x40
- Threaded housings
- Rectangular housings

Float switches

- Standard
- Mini level
- Adjustable

Tilt sensors

- Mini level

Safety

Rope-pull safety switches

- SR
- SRM
- SiRK
- S/Si
- SiZ

Safety switches for hinged guards

- SHS3
- SHS
- I88...VKS/VKW
- I88...AHDB
- GC...VKS/VKW

Safety switches with separate actuator - Plastic body

- SKI
- SKT
- ENK...VTU
- SKC/SK

Safety switches with separate actuator - Metal body

- ENM2
- GC

Speed governor safety switch with remote reset

- SGS

Safety relays

- SCR Cat 3
- SCR Cat 4

Safety magnetic switches

- MUZ Control relay for Cat 2, 3 & 4
- MRK switch
- MAK Coded magnetic switches

Safety switches - Solenoid locking

- SLK
- SLM (Interlocking)

Photo-electric safety devices

- SOC/SOM Safety light curtain Type 2/Type 4

Switches

Metal bodied limit switches

- GC
- ENM2
- SN2
- D

Plastic bodied limit switches

- IF
- I88
- C2
- Bi2
- Ti2
- ENK

Footswitches

- F1 Single pedal
- F3 Triple pedal
- F2 Dual pedal
- FBT Medical

Pendant control stations

- P02
- PL05
- PL03
- PLB08

Further Information

Detailed product information is available upon request, please e-mail: sales@bernstein-ltd.co.uk

Alternatively visit our web site: www.bernstein-ltd.co.uk

or telephone: **01922 744999**

or fax: **01922 457555**

or write to:
Bernstein Ltd
Unit One, Tintagel Way
Westgate, Aldridge
West Midlands WS9 8ER



Enclosures

Industrial enclosures

- CA Aluminium enclosures
- CT Polycarbonate & ABS enclosures
- CP Polyester Grey & Black enclosures
- General purpose painted mild steel enclosure range

Control enclosures

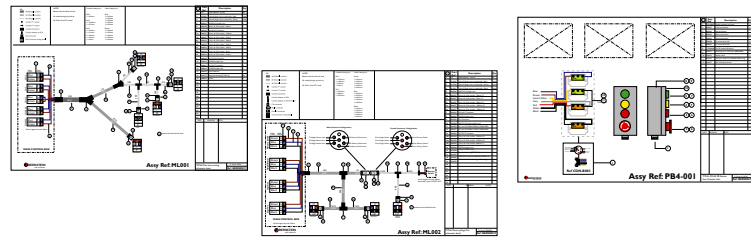
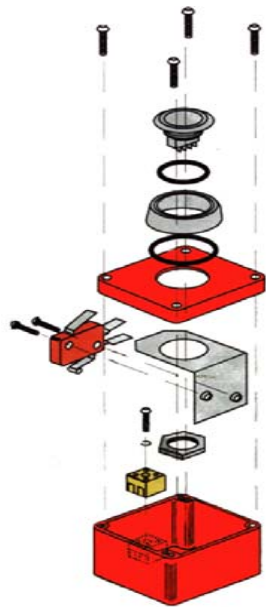
- CC-4000 Modular control enclosures
- CC-4000 SL Slim line modular control enclosures
- CC-3000 Modular lightweight control enclosures
- WS-6000 Compact Industrial workstation
- CC-480/600NR Stainless steel control enclosures
- CC-10 Aluminium compact control enclosures

Hand held enclosures

- CH-3000 Mobile operator terminal housing with enabling switch

Suspension systems

- CS-3000 Medium load aluminium suspension system
- CS-2000 50/60/80 Medium to heavy load steel suspension system
- CS-2000 80x140 Extra heavy load steel suspension system
- CS480 & CS600 Stainless steel suspension systems
- CS-2000 SL 45x60 Lightweight aluminium suspension system



- Bernstein Added Value
- Contract Manufacturing
- Contract Assembly

As a worldwide manufacturer of safety switches, sensors and enclosures, the name of Bernstein has become synonymous with innovation, reliability & value. A wealth of technical expertise has been accumulated over many years ensuring that products are developed to achieve optimum performance with the highest possible quality.

In recent times Bernstein has recognised the continuing trend in the UK towards a **"One Stop Solution"** for product supply strategies. To support this change, Bernstein has invested heavily in developing its own in-house, **"Added Value"** manufacturing & assembly capabilities.

■ Why Outsource?

The sub-contracting or outsourcing of in-house processes will deliver the following benefits:

■ Freeing Capital

The capital freed up by outsourcing can be invested more profitably elsewhere in the business, this typically applies to smaller to medium sized businesses.

■ Growth

Outsourcing allows growth to be readily absorbed without the need of significant investment in equipment or people.

■ Latest technology & Expertise

Outsourcing provides access to specialist manufacturing and the latest technology without the need of capital investment.

■ Competitive edge

By concentration of core activities, organisations can be more flexible & responsive, giving them an "edge" over competition.

■ Cost savings

The cost is clearly quantifiable & predictable, whereas the internal costs of manufacture are often unknown and rarely monitored.

■ Direct Benefits

■ Simplified Resource Process

Less suppliers to control & co-ordinate

■ Reduced Inventory & Overheads

Less parts to order
Less stock to hold
Less labour required

■ Shorter Lead Times Achieved

Easier to apply leverage to external suppliers

■ Supply Control Made Easier

Allows Kanban JIT control to be implemented. Smooths out peaks in demand



■ Cost savings

■ HOW WE SAVE YOU MONEY!

■ Volume Purchases

Because we buy in bulk our basic material costs are less, and the savings are passed on to our customer.

■ Labour Saving

The assembly process takes place in a "controlled" environment using competent but less technically skilled labour. The assembly is effectively "de-skilled"

■ Value / Cost Engineering

By using our in-house experience and knowledge, we will simplify and rationalise the design, streamline material & labour elements, effectively engineering cost out of the product.

■ Lower Overheads

Due to manufacturing efficiencies and production volume, overhead costs are extremely low.



All assembly is carried out in our ISO9001:2000 approved facilities

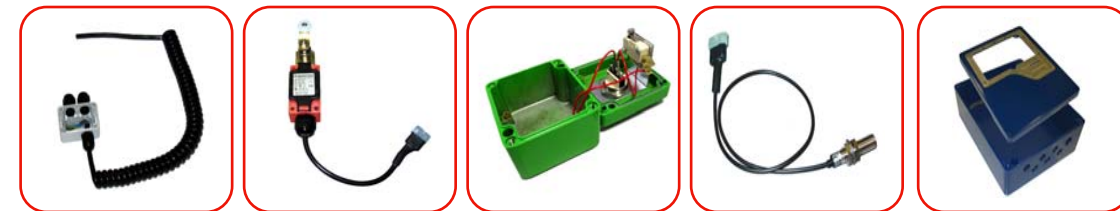
■ Bernstein Contract Manufacture & assembly - Switches Sensors Enclosures



Military spec enclosure

Enclosures - Machining, Pre-treatment, finishing, screen printing populating and assembly form part of our added value service. Our philosophy is to do as much (or as little) to meet our customers needs.

Switches & Sensors - Can be pre-wired and/or fitted with virtually any connector, allowing rapid install and "non-electrician" replacement in service/repair situations. When used in conjunction with splitter box and micro style connectors, it creates the ultimate plug'n play solution - saving you time and money.



■ Bernstein Electro-mechanical assemblies



To complete the "one stop shop" strategy, complementary wired assembly solutions are available. Ranging from very simple assemblies to highly complex wiring applications. Procurement of support products is also undertaken, typically CNC punched/formed metal fabrications and PCB boards. Other ancillary "package" products are also available.

All finished goods are inspected and tested to our own "benchmark" standards and to those specified by our customers.



■ Bernstein Cable assemblies



The manufacturing capability includes wiring harnesses, electric & electronic cable assemblies, multi-core & single conductor products. Utilising any combination of single or multi-core cables, including BS, UL/CSA & VDE approved materials. Encompassing virtually any size and type of cable.

Our Customer base includes all commercial and industrial sectors, ranging from small family businesses to Multi- National corporations. The variety of industries served includes automotive, white goods, brown goods, heating, lighting, power & catering.

- Discreet Wire Assemblies
- Bespoke Cable Assemblies
- Cable Looms
- Wiring Harnesses
- Electronic Cable Assemblies
- Electrical Cable Assemblies

