



## JIC ST PPO ENCLOSURE

### Features and Benefits

- Screw covers available in opaque or clear versions.
- Bases and opaque covers are foamed thermoplastic.
- The matte finish hides scratches and dirt.
- Clear covers are polycarbonate.
- Shipped complete with mounting feet, gasket, and cover.
- Features the unique Integra Panel Suspension System.
- Multiple bosses for direct DIN rail attachment.
- UL-50 / c-UL Listed (file #E229365)
- Also available with flanges, contact factory for more information.
- Call for availability.

The JIC ST Line from Integra Enclosures is 6P listed for submersible applications.

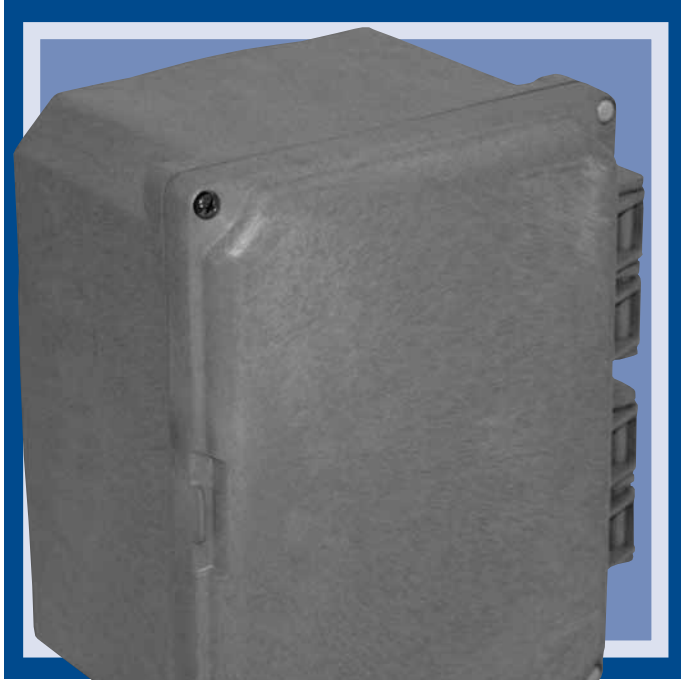





UL Types  
2, 3, 3R, 3S, 4, 4X,  
5, 6/6P, 12, 13

IP 68

Part Number	Description	Size
J6064S	JIC Line/Opaque Screw Cover	6"x6"x4"
J6064SC	JIC Line/Clear Screw Cover	6"x6"x4"
J8064S	JIC Line/Opaque Screw Cover	8"x6"x4"
J8064SC	JIC Line/Clear Screw Cover	8"x6"x4"
J8084S	JIC Line/Opaque Screw Cover	8"x8"x4"
J8084SC	JIC Line/Clear Screw Cover	8"x8"x4"
J10084S	JIC Line/Opaque Screw Cover	10"x8"x4"
J10084SC	JIC Line/Clear Screw Cover	10"x8"x4"
J10086S	JIC Line/Opaque Screw Cover	10"x8"x6"
J10086SC	JIC Line/Clear Screw Cover	10"x8"x6"
J12104S	JIC Line/Opaque Screw Cover	12"x10"x4"
J12104SC	JIC Line/Clear Screw Cover	12"x10"x4"
J12106S	JIC Line/Opaque Screw Cover	12"x10"x6"
J12106SC	JIC Line/Clear Screw Cover	12"x10"x6"
J141206S	JIC Line/Opaque Screw Cover	14"x12"x6"
J141206SC	JIC Line/Clear Screw Cover	14"x12"x6"
J161407S	JIC Line/Opaque Screw Cover	16"x14"x7"
J161407SC	JIC Line/Clear Screw Cover	16"x14"x7"
J181610S	JIC Line/Opaque Screw Cover	18"x16"x10"
J181610SC	JIC Line/Clear Screw Cover	18"x16"x10"



## JIC HT PPO ENCLOSURE

### Features and Benefits

- Hinged covers are 100% non-metallic and easy to remove and replace.
- Closes with two captive screws.
- Bases and opaque covers are foamed thermoplastic.
- The matte finish hides scratches and dirt.
- Clear covers are polycarbonate.
- Shipped complete with mounting feet, gasket, and cover.
- Features the unique Integra Panel Suspension System.
- Multiple bosses for direct DIN rail attachment.
- UL-50 / c-UL Listed (file #E207562)
- Also available with flanges, contact factory for more information.
- Call for availability.

The JIC HT Line from Integra Enclosures is 4X listed, and is designed for use in any electrical application requiring a sturdy enclosure.



UL Types  
2, 3, 3R, 3S, 4, 4X, 5, 12  
and Marine Use



IP 66

Part Number	Description	Size
J6064H	JIC Line/Opaque Hinge Cover	6"x6"x4"
J6064HC	JIC Line/Clear Hinge Cover	6"x6"x4"
J8064H	JIC Line/Opaque Hinge Cover	8"x6"x4"
J8064HC	JIC Line/Clear Hinge Cover	8"x6"x4"
J8084H	JIC Line/Opaque Hinge Cover	8"x8"x4"
J8084HC	JIC Line/Clear Hinge Cover	8"x8"x4"
J10084H	JIC Line/Opaque Hinge Cover	10"x8"x4"
J10084HC	JIC Line/Clear Hinge Cover	10"x8"x4"
J10086H	JIC Line/Opaque Hinge Cover	10"x8"x6"
J10086HC	JIC Line/Clear Hinge Cover	10"x8"x6"
J12104H	JIC Line/Opaque Hinge Cover	12"x10"x4"
J12104HC	JIC Line/Clear Hinge Cover	12"x10"x4"
J12106H	JIC Line/Opaque Hinge Cover	12"x10"x6"
J12106HC	JIC Line/Clear Hinge Cover	12"x10"x6"
J141206H	JIC Line/Opaque Hinge Cover	14"x12"x6"
J141206HC	JIC Line/Clear Hinge Cover	14"x12"x6"
J161407H	JIC Line/Opaque Hinge Cover	16"x14"x7"
J161407HC	JIC Line/Clear Hinge Cover	16"x14"x7"
J181610H	JIC Line/Opaque Hinge Cover	18"x16"x10"
J181610HC	JIC Line/Clear Hinge Cover	18"x16"x10"



## JIC HT-6P PPO ENCLOSURE

### Features and Benefits

- Hinged covers are 100% non-metallic and easy to remove and replace.
- Closes with four captive screws.
- Bases and opaque covers are foamed thermoplastic.
- The matte finish hides scratches and dirt.
- Clear covers are polycarbonate.
- Shipped complete with mounting feet, gasket, and cover.
- Features the unique Integra Panel Suspension System.
- Multiple bosses for direct DIN rail attachment.
- UL-50 / c-UL Listed (file #E207562)
- Also available with flanges, contact factory for more information.
- Call for availability.

The JIC HT-6P Line from Integra Enclosures is designed for use in any application requiring a sturdy enclosure, and is also listed for use in submersible applications.



c



UL Types

2, 3, 3R, 3S, 4, 4X, 5,

6/6P, 12 and Marine Use

IP 68

Part Number	Description	Size
J6064H-6P	JIC Line/Opaque Hinge Cover/UL-6P	6"x6"x4"
J6064HC-6P	JIC Line/Clear Hinge Cover/UL-6P	6"x6"x4"
J8064H-6P	JIC Line/Opaque Hinge Cover/UL-6P	8"x6"x4"
J8064HC-6P	JIC Line/Clear Hinge Cover/UL-6P	8"x6"x4"
J10084H-6P	JIC Line/Opaque Hinge Cover/UL-6P	10"x8"x4"
J10084HC-6P	JIC Line/Clear Hinge Cover/UL-6P	10"x8"x4"
J10086H-6P	JIC Line/Opaque Hinge Cover/UL-6P	10"x8"x6"
J10086HC-6P	JIC Line/Clear Hinge Cover/UL-6P	10"x8"x6"
J12104H-6P	JIC Line/Opaque Hinge Cover/UL-6P	12"x10"x4"
J12104HC-6P	JIC Line/Clear Hinge Cover/UL-6P	12"x10"x4"
J12106H-6P	JIC Line/Opaque Hinge Cover/UL-6P	12"x10"x6"
J12106HC-6P	JIC Line/Clear Hinge Cover/UL-6P	12"x10"x6"
J141206H-6P	JIC Line/Opaque Hinge Cover/UL-6P	14"x12"x6"
J141206HC-6P	JIC Line/Clear Hinge Cover/UL-6P	14"x12"x6"
J161407H-6P	JIC Line/Opaque Hinge Cover/UL-6P	16"x14"x7"
J161407HC-6P	JIC Line/Clear Hinge Cover/UL-6P	16"x14"x7"
J181610H-6P	JIC Line/Opaque Hinge Cover/UL-6P	18"x16"x10"
J181610HC-6P	JIC Line/Clear Hinge Cover/UL-6P	18"x16"x10"



## JIC HL PPO ENCLOSURE

### Features and Benefits

- Features factory installed, bolted-on stainless steel locking latches.
- The matte finish hides scratches and dirt.
- Bases and opaque covers are foamed thermoplastic.
- The standard color is dark gray with a matte finish.
- Clear covers are polycarbonate.
- Shipped complete with mounting feet, gasket, and cover.
- Features the unique Integra Panel Suspension System.
- Multiple bosses for direct DIN rail attachment.
- UL-50 / c-UL Listed (file #E207562)
- Also available with flanges, contact factory for more information.
- Call for availability.

The JIC HL Line from Integra Enclosures is designed for use in any electrical application requiring a sturdy enclosure.



UL Types  
2, 3, 3R, 3S, 4, 4X, 5,  
12 and Marine Use

IP 66

Part Number	Description	Size
J6064HLL	JIC Line/Opaque Hinge Cover/Locking Latch	6"x6"x4"
J6064HCLL	JIC Line/Clear Hinge Cover/Locking Latch	6"x6"x4"
J8064HLL	JIC Line/Opaque Hinge Cover/Locking Latch	8"x6"x4"
J8064HCLL	JIC Line/Clear Hinge Cover/Locking Latch	8"x6"x4"
J8084HLL	JIC Line/Opaque Hinge Cover/Locking Latch	8"x8"x4"
J8084HCLL	JIC Line/Clear Hinge Cover/Locking Latch	8"x8"x4"
J10084HLL	JIC Line/Opaque Hinge Cover/Locking Latch	10"x8"x4"
J10084HCLL	JIC Line/Clear Hinge Cover/Locking Latch	10"x8"x4"
J10086HLL	JIC Line/Opaque Hinge Cover/Locking Latch	10"x8"x6"
J10086HCLL	JIC Line/Clear Hinge Cover/Locking Latch	10"x8"x6"
J12104HLL	JIC Line/Opaque Hinge Cover/Locking Latch	12"x10"x4"
J12104HCLL	JIC Line/Clear Hinge Cover/Locking Latch	12"x10"x4"
J12106HLL	JIC Line/Opaque Hinge Cover/Locking Latch	12"x10"x6"
J12106HCLL	JIC Line/Clear Hinge Cover/Locking Latch	12"x10"x6"
J141206HLL	JIC Line/Opaque Hinge Cover/Locking Latch	14"x12"x6"
J141206HCLL	JIC Line/Clear Hinge Cover/Locking Latch	14"x12"x6"
J161407HLL	JIC Line/Opaque Hinge Cover/Locking Latch	16"x14"x7"
J161407HCLL	JIC Line/Clear Hinge Cover/Locking Latch	16"x14"x7"
J181610HLL	JIC Line/Opaque Hinge Cover/Locking Latch	18"x16"x10"
J181610HCLL	JIC Line/Clear Hinge Cover/Locking Latch	18"x16"x10"