



PREMIUM ST POLYCARBONATE ENCLOSURE

Features and Benefits

- Closes with four captive cover screws.
- The standard color is light gray with a gloss finish.
- Bases, opaque covers and clear covers are polycarbonate.
- Shipped complete with mounting system, gasket, and cover.
- Features the unique Integra Panel Suspension System.
- Features multiple bosses for easy installation of devices and DIN rails.
- UL-50 / c-UL Listed (file #E229365)

Premium ST enclosures are Junction Boxes with screw covers and are designed for use in any electrical application requiring a sturdy enclosure.




UL Types
2, 3, 3R, 3S, 4, 4X, 5, 6/6P,
12, and Marine Use.

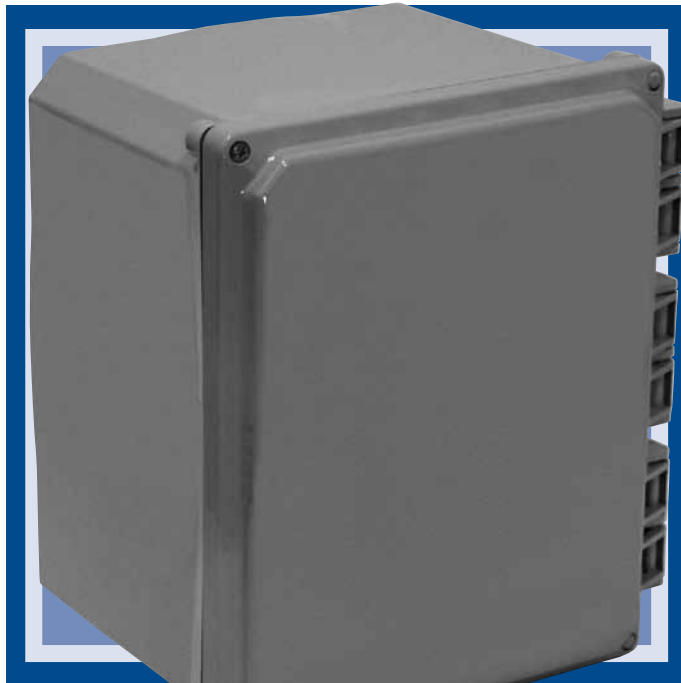



IP 68



Contact Factory
for Details

P/N	Mounting Feet System	P/N	Mounting Flange System	Size
H6064S	Premium Line/Opaque Screw Cover	H6064SF	Premium Line/Opaque Screw Cover/Flanges	6"x6"x4"
H6064SC	Premium Line/Clear Screw Cover	H6064SCF	Premium Line/Clear Screw Cover/Flanges	6"x6"x4"
H8064S	Premium Line/Opaque Screw Cover	H8064SF	Premium Line/Opaque Screw Cover/Flanges	8"x6"x4"
H8064SC	Premium Line/Clear Screw Cover	H8064SCF	Premium Line/Clear Screw Cover/Flanges	8"x6"x4"
H8084S	Premium Line/Opaque Screw Cover	H8084SF	Premium Line/Opaque Screw Cover/Flanges	8"x8"x4"
H8084SC	Premium Line/Clear Screw Cover	H8084SCF	Premium Line/Clear Screw Cover/Flanges	8"x8"x4"
H10082S	Premium Line/Opaque Screw Cover	H10082SF	Premium Line/Opaque Screw Cover/Flanges	10"x8"x2"
H10082SC	Premium Line/Clear Screw Cover	H10082SCF	Premium Line/Clear Screw Cover/Flanges	10"x8"x2"
H10084S	Premium Line/Opaque Screw Cover	H10084SF	Premium Line/Opaque Screw Cover/Flanges	10"x8"x4"
H10084SC	Premium Line/Clear Screw Cover	H10084SCF	Premium Line/Clear Screw Cover/Flanges	10"x8"x4"
H10086S	Premium Line/Opaque Screw Cover	H10086SF	Premium Line/Opaque Screw Cover/Flanges	10"x8"x6"
H10086SC	Premium Line/Clear Screw Cover	H10086SCF	Premium Line/Clear Screw Cover/Flanges	10"x8"x6"
H12104S	Premium Line/Opaque Screw Cover	H12104SF	Premium Line/Opaque Screw Cover/Flanges	12"x10"x4"
H12104SC	Premium Line/Clear Screw Cover	H12104SCF	Premium Line/Clear Screw Cover/Flanges	12"x10"x4"
H12106S	Premium Line/Opaque Screw Cover	H12106SF	Premium Line/Opaque Screw Cover/Flanges	12"x10"x6"
H12106SC	Premium Line/Clear Screw Cover	H12106SCF	Premium Line/Clear Screw Cover/Flanges	12"x10"x6"
H141206S	Premium Line/Opaque Screw Cover	H141206SF	Premium Line/Opaque Screw Cover/Flanges	14"x12"x6"
H141206SC	Premium Line/Clear Screw Cover	H141206SCF	Premium Line/Clear Screw Cover/Flanges	14"x12"x6"
H161407S	Premium Line/Opaque Screw Cover	H161407SF	Premium Line/Opaque Screw Cover/Flanges	16"x14"x7"
H161407SC	Premium Line/Clear Screw Cover	H161407SCF	Premium Line/Clear Screw Cover/Flanges	16"x14"x7"
H181610S	Premium Line/Opaque Screw Cover	H181610SF	Premium Line/Opaque Screw Cover/Flanges	18"x16"x10"
H181610SC	Premium Line/Clear Screw Cover	H181610SCF	Premium Line/Clear Screw Cover/Flanges	18"x16"x10"



PREMIUM HT POLYCARBONATE ENCLOSURE

Features and Benefits

- Closes with two captive cover screws.
- The standard color is light gray with a gloss finish.
- Bases, opaque covers and clear covers are polycarbonate.
- Shipped complete with mounting system, gasket, and cover.
- Features the unique Integra Panel Suspension System.
- Features multiple bosses for easy installation of devices and DIN rails.
- UL-50 / c-UL Listed (file #E207562)

Premium HT enclosures are cabinet and cutout boxes with hinged covers that screw closed, and are designed for use in any electrical application requiring a sturdy enclosure.



UL Types
2, 3, 3R, 3S, 4, 4X,
5, 12, 13





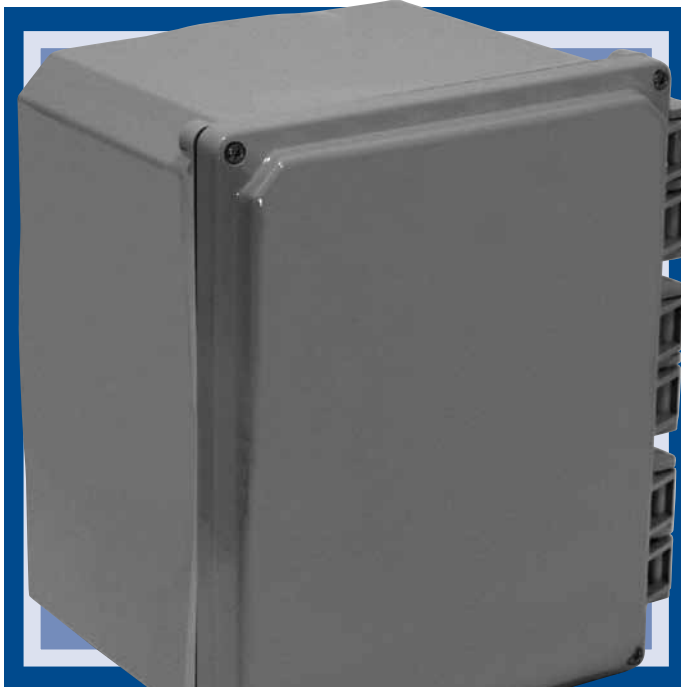


IP 66



Contact Factory
for Details

P/N	Mounting Feet System	P/N	Mounting Flange System	Size
H6064H	Premium Line/Opaque Hinge Cover	H6064HF	Premium Line/Opaque Hinge Cover/Flanges	6"x6"x4"
H6064HC	Premium Line/Clear Hinge Cover	H6064HCF	Premium Line/Clear Hinge Cover/Flanges	6"x6"x4"
H8064H	Premium Line/Opaque Hinge Cover	H8064HF	Premium Line/Opaque Hinge Cover/Flanges	8"x6"x4"
H8064HC	Premium Line/Clear Hinge Cover	H8064HCF	Premium Line/Clear Hinge Cover/Flanges	8"x6"x4"
H8084H	Premium Line/Opaque Hinge Cover	H8084HF	Premium Line/Opaque Hinge Cover/Flanges	8"x8"x4"
H8084HC	Premium Line/Clear Hinge Cover	H8084HCF	Premium Line/Clear Hinge Cover/Flanges	8"x8"x4"
H10082H	Premium Line/Opaque Hinge Cover	H10082HF	Premium Line/Opaque Hinge Cover/Flanges	10"x8"x2"
H10082HC	Premium Line/Clear Hinge Cover	H10082HCF	Premium Line/Clear Hinge Cover/Flanges	10"x8"x2"
H10084H	Premium Line/Opaque Hinge Cover	H10084HF	Premium Line/Opaque Hinge Cover/Flanges	10"x8"x4"
H10084HC	Premium Line/Clear Hinge Cover	H10084HCF	Premium Line/Clear Hinge Cover/Flanges	10"x8"x4"
H10086H	Premium Line/Opaque Hinge Cover	H10086HF	Premium Line/Opaque Hinge Cover/Flanges	10"x8"x6"
H10086HC	Premium Line/Clear Hinge Cover	H10086HCF	Premium Line/Clear Hinge Cover/Flanges	10"x8"x6"
H12104H	Premium Line/Opaque Hinge Cover	H12104HF	Premium Line/Opaque Hinge Cover/Flanges	12"x10"x4"
H12104HC	Premium Line/Clear Hinge Cover	H12104HCF	Premium Line/Clear Hinge Cover/Flanges	12"x10"x4"
H12106H	Premium Line/Opaque Hinge Cover	H12106HF	Premium Line/Opaque Hinge Cover/Flanges	12"x10"x6"
H12106HC	Premium Line/Clear Hinge Cover	H12106HCF	Premium Line/Clear Hinge Cover/Flanges	12"x10"x6"
H141206H	Premium Line/Opaque Hinge Cover	H141206HF	Premium Line/Opaque Hinge Cover/Flanges	14"x12"x6"
H141206HC	Premium Line/Clear Hinge Cover	H141206HCF	Premium Line/Clear Hinge Cover/Flanges	14"x12"x6"
H161407H	Premium Line/Opaque Hinge Cover	H161407HF	Premium Line/Opaque Hinge Cover/Flanges	16"x14"x7"
H161407HC	Premium Line/Clear Hinge Cover	H161407HCF	Premium Line/Clear Hinge Cover/Flanges	16"x14"x7"
H181610H	Premium Line/Opaque Hinge Cover	H181610HF	Premium Line/Opaque Hinge Cover/Flanges	18"x16"x10"
H181610HC	Premium Line/Clear Hinge Cover	H181610HCF	Premium Line/Clear Hinge Cover/Flanges	18"x16"x10"



PREMIUM HT-6P POLYCARBONATE ENCLOSURE

Features and Benefits

- Closes with four captive cover screws.
- The standard color is light gray with a gloss finish.
- Bases, opaque covers, and clear covers are polycarbonate.
- Shipped complete with mounting system, gasket, and cover.
- Features the unique Integra Panel Suspension System.
- Features multiple bosses for easy installation of devices and DIN rails.
- UL-50 / c-UL Listed (file #E207562)

The Premium HT-6P is designed for use in any application needing a submersible enclosure or any electrical application requiring a sturdy enclosure. They have hinged covers that screw closed.




UL Types
2, 3, 3R, 3S, 4, 4X,
5, 6/6P, 12, 13




IP 68



Contact Factory
for Details

P/N	Mounting Feet System	P/N	Mounting Flange System	Size
H6064H-6P	Premium Line/Opaque Hinge Cover	H6064HF-6P	Premium Line/Opaque Hinge Cover/Flanges	6"x6"x4"
H6064HC-6P	Premium Line/Clear Hinge Cover	H6064HCF-6P	Premium Line/Clear Hinge Cover/Flanges	6"x6"x4"
H8064H-6P	Premium Line/Opaque Hinge Cover	H8064HF-6P	Premium Line/Opaque Hinge Cover/Flanges	8"x6"x4"
H8064HC-6P	Premium Line/Clear Hinge Cover	H8064HCF-6P	Premium Line/Clear Hinge Cover/Flanges	8"x6"x4"
H8084H-6P	Premium Line/Opaque Hinge Cover	H8084HF-6P	Premium Line/Opaque Hinge Cover/Flanges	8"x8"x4"
H8084HC-6P	Premium Line/Clear Hinge Cover	H8084HCF-6P	Premium Line/Clear Hinge Cover/Flanges	8"x8"x4"
H10082H-6P	Premium Line/Opaque Hinge Cover	H10082HF-6P	Premium Line/Opaque Hinge Cover/Flanges	10"x8"x2"
H10082HC-6P	Premium Line/Clear Hinge Cover	H10082HCF-6P	Premium Line/Clear Hinge Cover/Flanges	10"x8"x2"
H10084H-6P	Premium Line/Opaque Hinge Cover	H10084HF-6P	Premium Line/Opaque Hinge Cover/Flanges	10"x8"x4"
H10084HC-6P	Premium Line/Clear Hinge Cover	H10084HCF-6P	Premium Line/Clear Hinge Cover/Flanges	10"x8"x4"
H10086H-6P	Premium Line/Opaque Hinge Cover	H10086HF-6P	Premium Line/Opaque Hinge Cover/Flanges	10"x8"x6"
H10086HC-6P	Premium Line/Clear Hinge Cover	H10086HCF-6P	Premium Line/Clear Hinge Cover/Flanges	10"x8"x6"
H12104H-6P	Premium Line/Opaque Hinge Cover	H12104HF-6P	Premium Line/Opaque Hinge Cover/Flanges	12"x10"x4"
H12104HC-6P	Premium Line/Clear Hinge Cover	H12104HCF-6P	Premium Line/Clear Hinge Cover/Flanges	12"x10"x4"
H12106H-6P	Premium Line/Opaque Hinge Cover	H12106HF-6P	Premium Line/Opaque Hinge Cover/Flanges	12"x10"x6"
H12106HC-6P	Premium Line/Clear Hinge Cover	H12106HCF-6P	Premium Line/Clear Hinge Cover/Flanges	12"x10"x6"
H141206H-6P	Premium Line/Opaque Hinge Cover	H141206HF-6P	Premium Line/Opaque Hinge Cover/Flanges	14"x12"x6"
H141206HC-6P	Premium Line/Clear Hinge Cover	H141206HCF-6P	Premium Line/Clear Hinge Cover/Flanges	14"x12"x6"
H161407H-6P	Premium Line/Opaque Hinge Cover	H161407HF-6P	Premium Line/Opaque Hinge Cover/Flanges	16"x14"x7"
H161407HC-6P	Premium Line/Clear Hinge Cover	H161407HCF-6P	Premium Line/Clear Hinge Cover/Flanges	16"x14"x7"
H181610H-6P	Premium Line/Opaque Hinge Cover	H181610HF-6P	Premium Line/Opaque Hinge Cover/Flanges	18"x16"x10"
H181610HC-6P	Premium Line/Clear Hinge Cover	H181610HCF-6P	Premium Line/Clear Hinge Cover/Flanges	18"x16"x10"

PREMIUM LINE



PREMIUM HL POLYCARBONATE ENCLOSURE

Features and Benefits

- Closes with stainless steel latches.
- The standard color is light gray with a gloss finish.
- Bases, opaque covers, and clear covers are polycarbonate.
- Shipped complete with mounting system, gasket, and cover.
- Features the unique Integra Panel Suspension System.
- Features multiple bosses for easy installation of devices and DIN rails.
- UL-50 / c-UL Listed (file #E207562)

Premium HL enclosures have hinged covers that close with stainless steel latching, and are designed for use in any electrical application requiring a sturdy enclosure.



UL Types
2, 3, 3R, 3S, 4, 4X,
5, 12, 13





IP 66



RoHS



Contact Factory
for Details

P/N	Mounting Feet System	P/N	Mounting Flange System	Size
H6064HLL	Premium Line/Opaque Hinge Cover/Locking Latch	H6064HFLL	Premium Line/Opaque Hinge Cover/Latch/Flanges	6"x6"x4"
H6064HCLL	Premium Line/Clear Hinge Cover/Locking Latch	H6064HCFL	Premium Line/Clear Hinge Cover/Latch/Flanges	6"x6"x4"
H8064HLL	Premium Line/Opaque Hinge Cover/Locking Latch	H8064HFLL	Premium Line/Opaque Hinge Cover/Latch/Flanges	8"x6"x4"
H8064HCLL	Premium Line/Clear Hinge Cover/Locking Latch	H8064HCFL	Premium Line/Clear Hinge Cover/Latch/Flanges	8"x6"x4"
H8084HLL	Premium Line/Opaque Hinge Cover/Locking Latch	H8084HFLL	Premium Line/Opaque Hinge Cover/Latch/Flanges	8"x8"x4"
H8084HCLL	Premium Line/Clear Hinge Cover/Locking Latch	H8084HCFL	Premium Line/Clear Hinge Cover/Flanges	8"x8"x4"
H10082HLL	Premium Line/Opaque Hinge Cover/Locking Latch	H10082HFLL	Premium Line/Opaque Hinge Cover/Flanges	10"x8"x2"
H10082HCLL	Premium Line/Clear Hinge Cover/Locking Latch	H10082HCFL	Premium Line/Clear Hinge Cover/Flanges	10"x8"x2"
H10084HLL	Premium Line/Opaque Hinge Cover/Locking Latch	H10084HFLL	Premium Line/Opaque Hinge Cover/Flanges	10"x8"x4"
H10084HCLL	Premium Line/Clear Hinge Cover/Locking Latch	H10084HCFL	Premium Line/Clear Hinge Cover/Flanges	10"x8"x4"
H10086HLL	Premium Line/Opaque Hinge Cover/Locking Latch	H10086HFLL	Premium Line/Opaque Hinge Cover/Flanges	10"x8"x6"
H10086HCLL	Premium Line/Clear Hinge Cover/Locking Latch	H10086HCFL	Premium Line/Clear Hinge Cover/Flanges	10"x8"x6"
H12104HLL	Premium Line/Opaque Hinge Cover/Locking Latch	H12104HFLL	Premium Line/Opaque Hinge Cover/Flanges	12"x10"x4"
H12104HCLL	Premium Line/Clear Hinge Cover/Locking Latch	H12104HCFL	Premium Line/Clear Hinge Cover/Flanges	12"x10"x4"
H12106HLL	Premium Line/Opaque Hinge Cover/Locking Latch	H12106HFLL	Premium Line/Opaque Hinge Cover/Flanges	12"x10"x6"
H12106HCLL	Premium Line/Clear Hinge Cover/Locking Latch	H12106HCFL	Premium Line/Clear Hinge Cover/Flanges	12"x10"x6"
H141206HLL	Premium Line/Opaque Hinge Cover/Locking Latch	H141206HFLL	Premium Line/Opaque Hinge Cover/Flanges	14"x12"x6"
H141206HCLL	Premium Line/Clear Hinge Cover/Locking Latch	H141206HCFL	Premium Line/Clear Hinge Cover/Flanges	14"x12"x6"
H161407HLL	Premium Line/Opaque Hinge Cover/Locking Latch	H161407HFLL	Premium Line/Opaque Hinge Cover/Flanges	16"x14"x7"
H161407HCLL	Premium Line/Clear Hinge Cover/Locking Latch	H161407HCFL	Premium Line/Clear Hinge Cover/Flanges	16"x14"x7"
H181610HLL	Premium Line/Opaque Hinge Cover/Locking Latch	H181610HFLL	Premium Line/Opaque Hinge Cover/Flanges	18"x16"x10"
H181610HCLL	Premium Line/Clear Hinge Cover/Locking Latch	H181610HCFL	Premium Line/Clear Hinge Cover/Flanges	18"x16"x10"