

Heavy-duty suspension system

CS-2000 80/140

The BERNSTEIN heavy-duty suspension system, 80/140 from the CS-2000 range of suspension systems provides the right solution for even the highest loads and large cable looms with ready-made connectors.

System structure

The following conditions are important for your choice of system:

- Load-bearing capacity of the overall system
- Free passage area for cables
- Design
- System configuration

Having decided on the right size of system, you need to select the necessary components and tubes, so that you can put together the desired configuration.

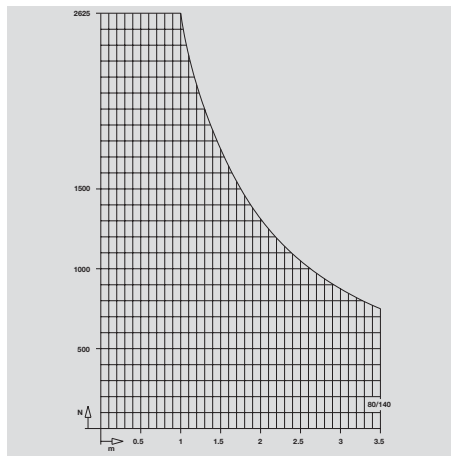
System benefits

- Installation openings
Generously dimensioned cable installation access points at all corners allow the easy installation of cables/wiring looms.
- Full use of cable ducts
within the entire suspension system without reduction of the rated diameter.
- Cable fixtures
Fixing points in each angle to clamp cables.
- Rotation angle limiters
can simply be added to joints at a later stage.
- High load-bearing capacity
Extremely high overall load-bearing capacity for applications with the highest loads.
- Divided expansion bellows
Expansion bellows for wall and intermediate joints can be installed at a later stage.
- Ready-made connections
Option of inserting ready-made connections with heavy-duty industrial plugs.



Connecting tubes

CS-2000 80/140



Load diagram

The load diagram illustrates the maximum load-bearing capacity for the chosen length of suspension system. If for a brief period of time (i.e. 5 seconds), a load of 75 kg is added, then this does not lead to dimensional deformation or destruction of the system.

Free cable passage area in the system

Suspension tube	80/140
Outside (mm)	80/140
Cross section (cm ²)	91
Wall thickness (mm)	5

Materials

- Gravity-die-cast aluminium components: AISi12 (Cu)
- Cast-iron components: GGG 40
- Steel welding constructions: St 37
- Suspension tubes: St 37
- Bearings: St/PTFE
- Seals: CR
- Cable access covers: AISi12 (Cu)
- Expansion bellows: PVC

Tubes

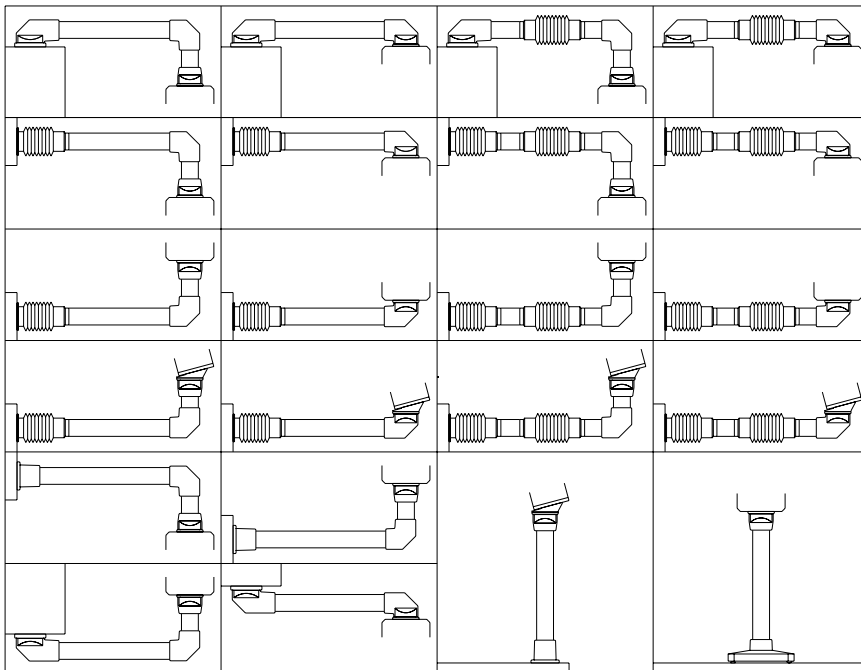
The steel tube for the suspension system 80/140 is available in a variety of different lengths. Tube lengths comply with DIN 7168. The steel tubes are supplied in RAL 7035 (light grey) powder coated.

Weight

per metre of tube 15 kg

Colours

- Suspension system components: light grey, RAL 7035
- Cable access covers: light grey, RAL 7035
- Expansion bellows: black, RAL 9005
- Tubes: light grey, RAL 7035



Available lengths of tube

Length (mm)	System 80/140 Part number
250	952.8.0460.00
500	952.8.0470.00
750	952.8.0480.00
1000	952.8.0490.00
1250	952.8.0500.00
1500	952.8.0510.00
2000	952.8.0530.00
3000	952.8.0550.00

Heavy-duty suspension system

CS-2000 System size 80/140

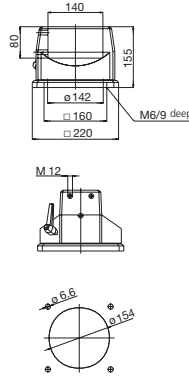


For enclosure mounting
Standard coupling CS-2000

Part	
Weight	(g) 4600
Material	Aluminium
Part number	RAL 7035 light grey 101.6.4760.00

Angle of rotation 300° with limiter
Complete with seals and fixing screws

Dimensions in mm



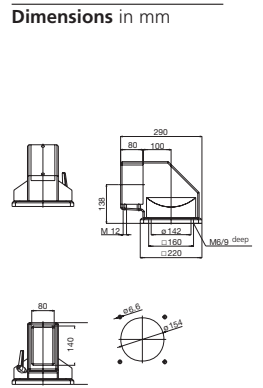
Detail	
Accessories, can be retro-fitted	
Pivoting angle limit stop (see page 427)	



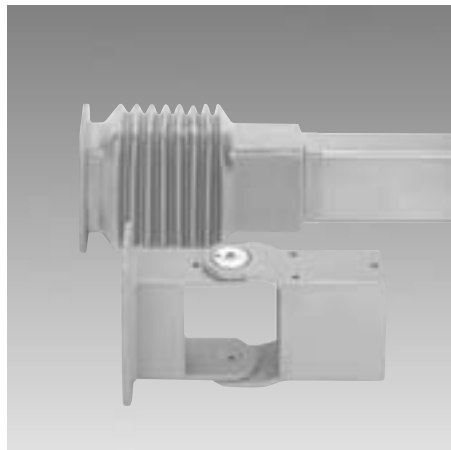
For enclosure mounting
Elbow coupling, flange, CS-2000

Part	
Weight	(g) 6900
Material	Aluminium
Part number	RAL 7035 light grey 101.6.4770.00

Angle of rotation 300° with limiter
Access cover
Complete with seals and fixing screws



Detail	
Accessories, can be retro-fitted	
Pivoting angle limit stop (see page 427)	

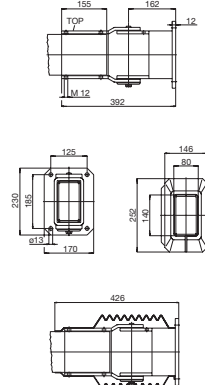


Wall joint CS-2000

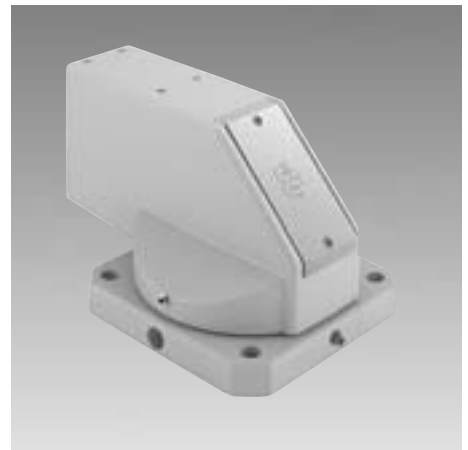
Part	
Weight	(g) 17180
Material	Steel
Part number	RAL 7035 light grey 101.6.4810.00

Expansion bellows can be zipped on at a later stage
Rotation angle 180° with limiter on either side
Suspension tube adjustment

Dimensions in mm



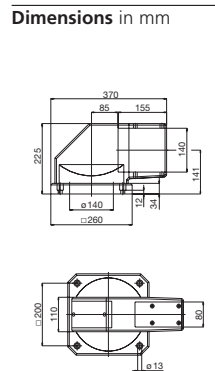
Detail	
Accessories, can be retro-fitted	
Pivoting angle limit stop (see page 427)	980.5.0620.00



Set-up CS-2000

Part	
Weight	(g) 28560
Material	GGG
Part number	RAL 7035 light grey 101.6.4820.00

Rotation angle 300°
Access cover



Available request



Elbow CS-2000

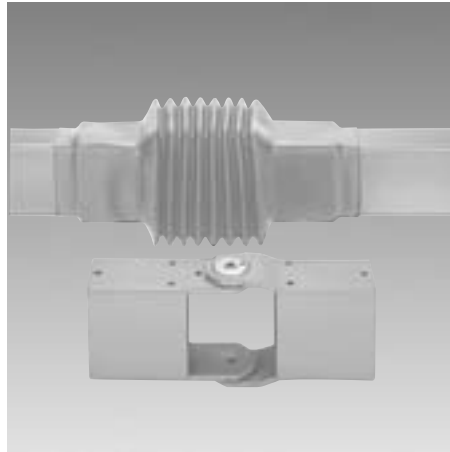
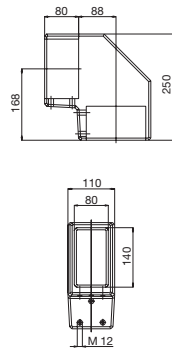
5400

Aluminium

101.6.4780.00

Access cover
Complete with seals.

Dimensions in mm



Intermediate joint CS-2000

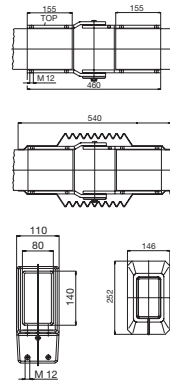
18080

Steel

101.6.4790.00

Expansion bellows can be zipped on at a later stage
Rotation angle 180° with limiter on either side
Suspension tube adjustment

Dimensions in mm



980.5.0620.00



Wall flange CS-2000

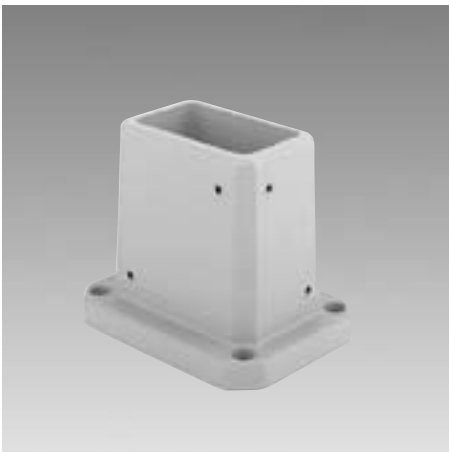
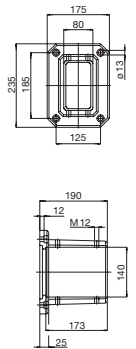
12920

GGG

101.6.4800.00

Suspension tube adjustment
Complete with seals

Dimensions in mm



Base bracket CS-2000

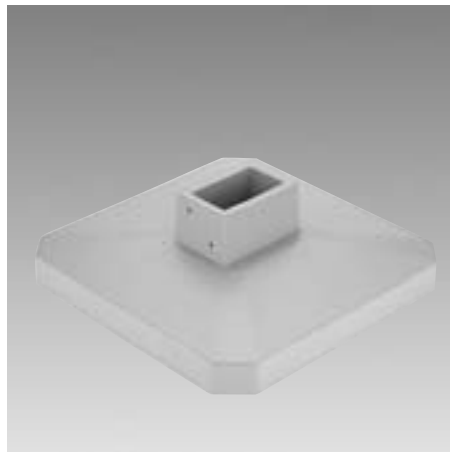
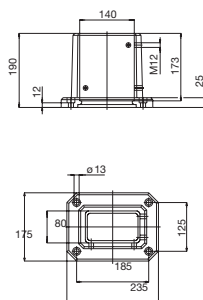
12900

GGG

101.6.4830.00

Complete with seals

Dimensions in mm



Self-supporting base bracket CS-2000

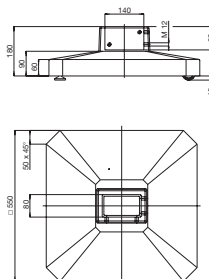
14800

Aluminium

101.6.3240.00

Large surface area foot for self-supporting applications

Dimensions in mm



Angle adapter, 15° CS-2000

1650

Aluminium

101.6.4840.00

For a 15° angle
Fixed firmly onto the flange or angle flange coupling
Complete with seals and fixing screws

Dimensions in mm

