

Coded magnetic switch for safety functions

The safety magnetic controller processes the NC or NO contact signals coming from the coded magnetic switches. Therefore, it is possible to detect the opening of the safety guard (door, hatch, protective hood etc.) and to turn off the safety output.



BERNSTEIN offers magnetic controllers for safety functions that fulfill **performance level d** according to **ISO 13849-1** and **SIL 3** according to **IEC 62061**. The system consists of the following components:

- Magnetic controller for safety functions
- Corresponding coded transducer units

Depending on the type of device, one or two coded transducer units (magnetic switch with corresponding magnet) of type:

- MAK-4236
- MAK-5236
- MAK-5336

can be connected to and monitored by the safety magnetic controllers (see page 16).

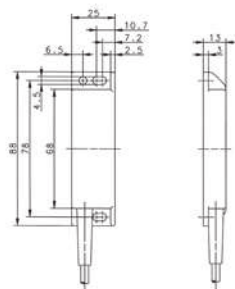
Features

- Redundancy by NO and NC contacts
- Manipulation safety by multi-coding
- Monitoring of the return circuit (depending on device type)
- **PL d** according to **ISO 13849-1**
- **SIL 3** according to **IEC 62061**

Coded magnetic switch



MAK-4236

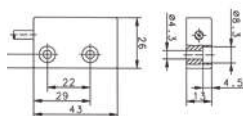


Features coded magnet switch in combination with a safety evaluation unit:

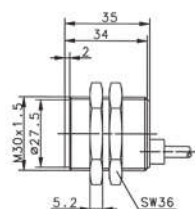
- Redundancy by NO and NC contacts
- Manipulation safety by multi-coding



MAK-5236



MAK-5336



Technical data

- Ambient temperature -5 °C to $+70\text{ °C}$
- Protection class **IP 67**
- Enclosure material **PA 6.6** (MAK 42 and 53) and **PBT** (MAK 52)

Article number	Designation	Cable length	Sensing distance S_{an}	Ref. magnet Designation	Ref. magnet Article number
6490642315	MAK-4236-3	3 m	4 mm	TK-42-CD	640204310
6490642302	MAK-4236-6	6 m			
6490642303	MAK-4236-9	9 m			
6490642305	MAK-4236-STK	Connector M12			
6490652316	MAK-5236-3	3 m	3 mm	TK-52-CD/2	6402052311
6490652307	MAK-5236-6	6 m			
6490652308	MAK-5236-9	9 m			
6490652309	MAK-5236-STK	Connector M12			
6490653317	MAK-5336-3	3 m	3 mm	TK-43-CD	6402043312
6490653311	MAK-5336-6	6 m			
6490653312	MAK-5336-9	9 m			
6490653313	MAK-5336-STK	Connector M12			