

# Safety Switches with Separate Actuator

## SK



The SK safety position switch is an industry standard and can be used in virtually any application.

Thanks to design safety features conforming to VDE 0660 T200, IEC 60947-5-1 and the test regulations GS-ET 15, the SK is particularly suitable for personal protection applications. Its versatility is enhanced by the variable actuator head and two actuator openings.

Other decisive advantages include:

- **Different actuating forces:**

Corresponding to your specific application, in addition to the standard 10 N, you can also choose an actuating force of 5, 20 or 30 N.

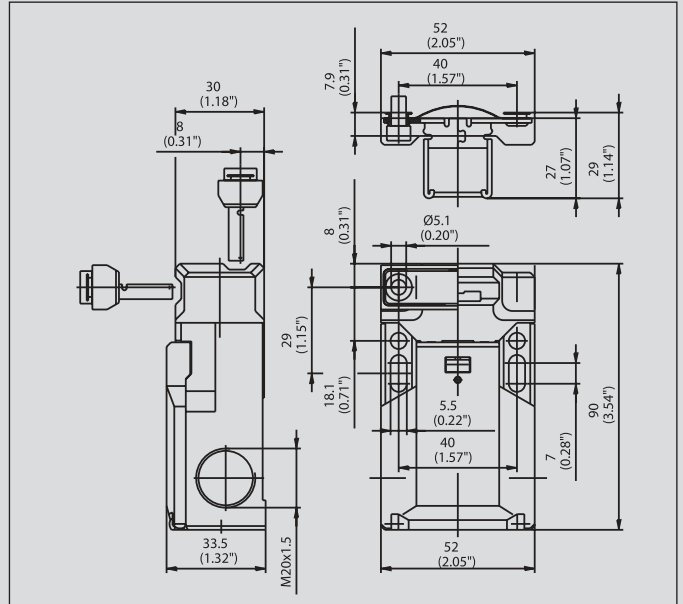
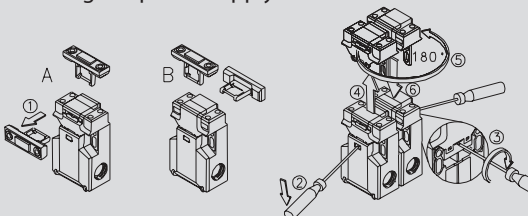
Actuating forces from 30 to 100 N can be realised with the aid of additional components that are mounted on the outside of the switch.

- **Anti-tamper facility:**

The switching system is protected by multiple coding to ensure enhanced safety of your application.

- **Outstanding handling:**

With the two slots you can easily adjust the SK safety switch and lock it in position by means of the two holes accessible from the top or the two holes accessible from the front. The switch can be wired from three different sides. A transparent cover prevents foreign particles from entering the contact space while connecting the power supply cable.



50 mm to direction of adjustment  
Actuator: metal

### Technical data

Electrical data		
Rated insulation voltage (up to) <sup>①</sup>	U <sub>i</sub> max.	400 V AC
Rated operating voltage	U <sub>e</sub> max.	240 V
Conventional thermal current (up to) <sup>①</sup>	I <sub>the</sub>	10 A
Utilization category		AC-15, U <sub>e</sub> /I <sub>e</sub> 240 V / 1.5 A
Mechanical data		
Switching frequency		≤ 30/min
Mechanical service life		1 x 10 <sup>6</sup> switching cycles
B10d (bis zu) <sup>①</sup>		2 Mill.
Short-circuit protection (up to) <sup>①</sup>		Fuse 10 A gL/gG
Protection class		II, Insulated
Ambient temperature		-30 °C ... + 80 °C
Protection class		IP 65 conforming to IEC/EN 60529
Type of connection		Screw connections
Conductor cross sections		Single-wire 0.5 – 1.5 mm <sup>2</sup> or Stranded wire with ferrule 0.5 – 1.5 mm <sup>2</sup>
Enclosure		Thermoplastic, glass fibre-reinforced (UL94-V0)
Cable entry		3 x M20 x 1.5
Standards		
VDE 0660 T100, DIN EN 60947-1, IEC 60947-1		
VDE 0660 T200, DIN EN 60947-5-1, IEC 60947-5-1		

① Depending on switching system. See Table on Pages 70 – 73.