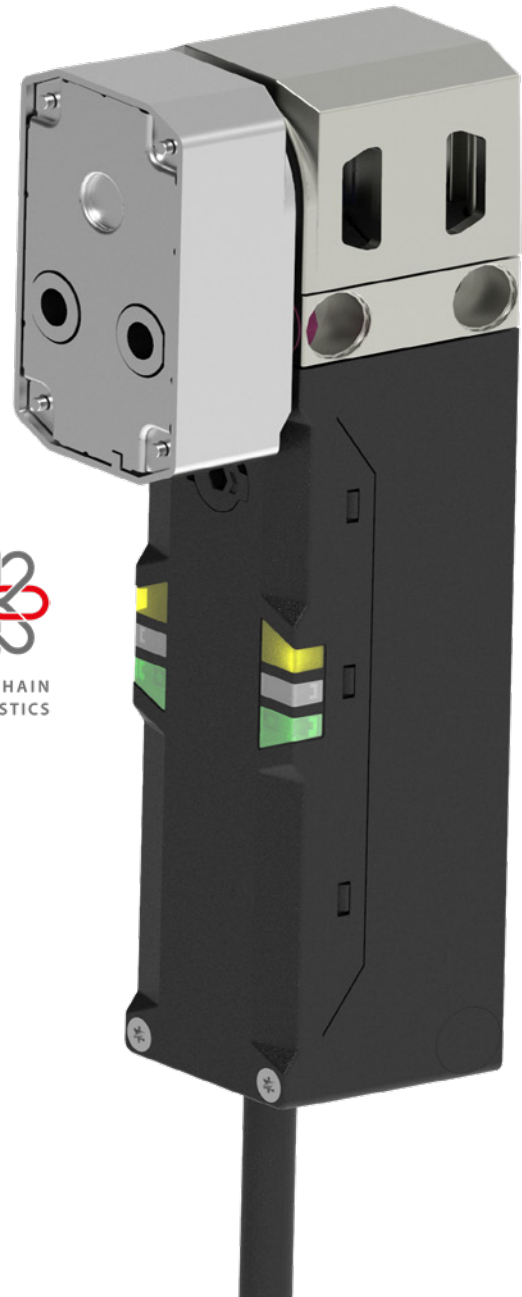


# SLO safe guard locking with RFID and OSSD

## Locked safely – intelligently networked

The safe guard locking SLO (Safety Lock OSSD) reliably protects people before accessing hazardous machine areas with a dangerous overrun. It can be seamlessly integrated into modern safety architectures. Via Daisy Chain Diagnostics (DCD), the SLO provides extensive status information and also supports predictive maintenance concepts. In combination with further components of the SMART Safety System, a continuous, diagnostics-capable solution for industrial applications is created.



## PRODUCT-HIGHLIGHTS

- **Guard locking with locking force up to 3000 N**
  - provides reliable protection against hazards
- **Series connection of multiple devices possible**
  - reduces the need for safety inputs
- **Diagnostic-capable via Daisy Chain Diagnostics (DCD)**
  - seamless integration into the SMART Safety System
- **Supports predictive maintenance**
  - detects changes in condition in order to avoid downtime
- **Robust stainless-steel head**
  - withstands even demanding environments

## Bestelldaten SLO

Article number	Designation	Series Connection	Guard locking principle		Auxiliary outputs	Guard locking control		Coding level
			Spring-bistable Power to unlock	Magnet Power to lock		1-channel	2-channel	
6018300001	SLO-2/B2/3-L-E0,22	No	x		Door & guard locking		x	low
6018300002	SLO-2/B2/3-H-E0,22	No	x		Door & guard locking		x	high
6018300003	SLO-2/B2/3-U-E0,22	No	x		Door & guard locking		x	unique
6018300004	SLO-5/B2/0-L-E0,22	Yes	x		none		x	low
6018300005	SLO-5/B2/0-H-E0,22	Yes	x		none		x	high
6018300006	SLO-5/B2/0-U-E0,22	Yes	x		none		x	unique
6018300007	SLO-5/B1/1-L-E0,22	Yes	x		door	x		low
6018300008	SLO-5/B1/1-H-E0,22	Yes	x		door	x		high
6018300009	SLO-5/B1/1-U-E0,22	Yes	x		door	x		unique
6018300010	SLO-5/M1/1-L-E0,22	Yes		x	door	x		low
6018300011	SLO-5/M1/1-H-E0,22	Yes		x	door	x		high
6018300012	SLO-5/M1/1-U-E0,22	Yes		x	door	x		unique
6018301001	SLO-0	Associated actuator for all coding levels						

\* The actuators are not included in delivery – please order separately!

## Technical data

Available coding levels: low and high

The high-coded version is also available as a one-time teachable (unique) variant.

### Electrical data

- Rated operating voltage (U<sub>e</sub>): 24 V DC, reverse polarity protected, +25 %, -20 % (PELV / SELV power supply)
- Output current of the safety outputs I<sub>e</sub>: 250 mA
- Output current of the signalling outputs I<sub>e</sub>: 50 mA

### Mechanical data

- Housing: thermoplastic, glass fibre reinforced (UL 94-V0)
- Head mechanism: stainless steel / thermoplastic, glass fibre reinforced (UL 94-V0)
- Extraction force ≤ 20 N
- Guard locking principle (depending on version): bistable spring (power to unlock), magnet (power to lock)
- Guard locking force F<sub>zh</sub>: 3000 N (EN ISO 14119)
- Connection type: 22 cm pigtail with M12 connector

### Environmental data

- Ambient temperature: -20 °C ... +60 °C
- Degree of protection: IP66 / IP67 / IP69

### Safety-related data according to EN ISO 13849-1

#### Door monitoring

Category 4 up to PL e

#### Guard locking

- **Power to unlock**

Single-channel guard locking control: Category 2 up to PL d

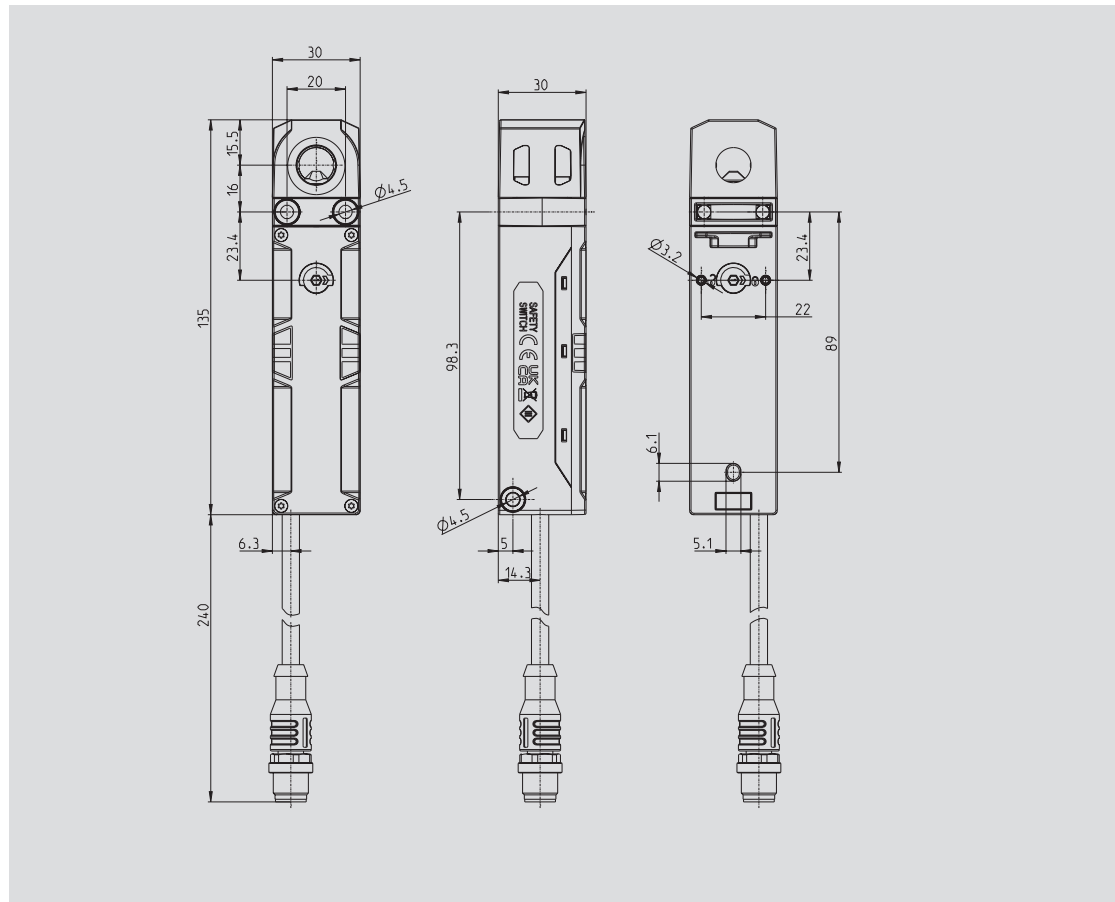
Two-channel guard locking control: Category 3 up to PL e

- **Power to lock**

Single-channel guard locking control: Category 2 up to PL d

**Accessories on page 34**

# SLO safe guard locking with RFID and OSSD



Despite its compact design of only 30 × 30 × 135 mm, the SLO provides a guard locking force of 3000 N and degree of protection IP69.

