

BERNSTEIN attachment solutions

Single coupling head (suspended console version)



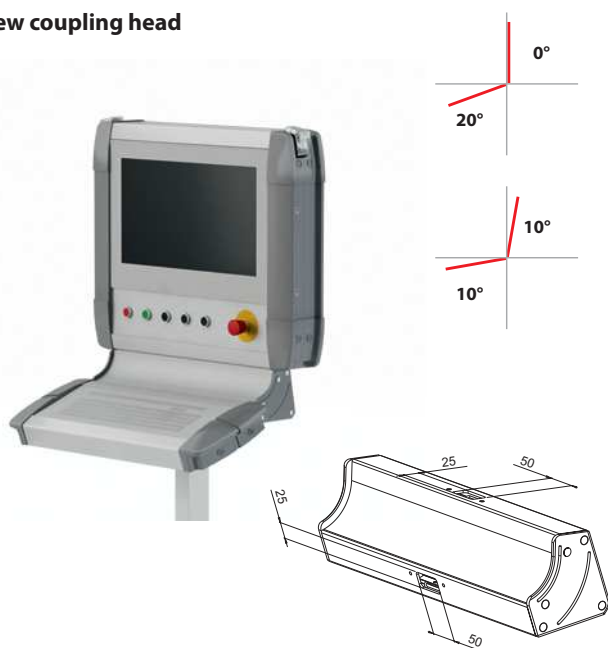
The coupling head (single) combines the upper section of the console that is attached to a suspension system from above with the lower section. The lower section of the console can be seamlessly adjusted between 0 and 30°. Through the installation openings to the sides, cables can easily be positioned. The coupling head is available in RAL 7035 or in RAL 9006. Other colours are available on request.

Double coupling head (console version with suspension system attachment)



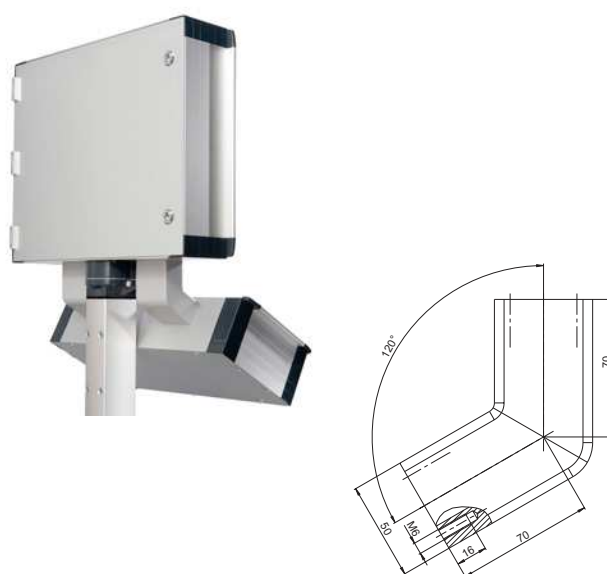
The coupling head (double) combines the upper section of the console with the lower section. The suspension system is attached using a CS-3000 coupling head. An infinitely variable angle adjustment of the upper section (0 - 30°) and of the lower section (0 - 20°) is possible. The coupling head is available as standard in RAL 7016 and in RAL 9006, other colours are available on request.

New coupling head



The new coupling head section is particularly suitable for applications where the focus is on a design-based solution. The section offers a very solid connection when using heavy and large enclosures thanks to plane support. The rear side has an installation opening for optimal cable leadthrough. The section is anodised and the side caps are offered in RAL 9006 as standard - other colours can be defined when filling out the checklist.

Rigid coupling head



For the attachment of the console upper section to the lower section. The lower section of the console is fixed and inclined by 30°. The cable channel is realised by the coupling head. The coupling heads are coated similar to RAL 9006.

BERNSTEIN attachment solutions

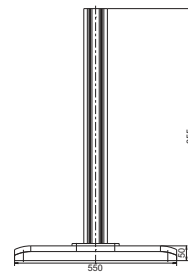
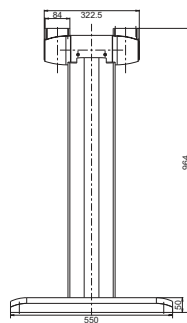
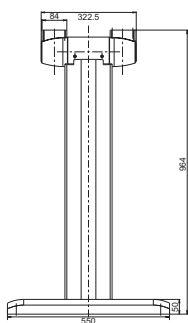


Single stand
Article number 1016786000



Console stand
Article number 1016787000

Stand CC-3000
Article number 1016509100



Upright stand with integrated coupling head for hinged attachment (infinitely variable adjustment from 0° to 30°) on BERNSTEIN control enclosures. Colour RAL 7035
Complete with installation material and instructions; mechanical machining in control enclosures is necessary.

Upright stand with integrated coupling head for hinged attachment of BERNSTEIN control enclosures (infinitely variable adjustment from 0° to 30°) and keyboard enclosures (infinitely variable adjustment from 0° to 20°). Colour RAL 7035
Complete with installation material and instructions; mechanical machining in control and keyboard enclosures is necessary.

Upright stand with straight column for mounting control enclosures. Coated similar to RAL 7035. Please order castors and coupling components separately.

Tube 80 with cable channel

Castors
Article number 9808012800



Set of castors, consisting of 4 swivel castors. Complete with installation material and instructions. Load-bearing capacity of each castor 50 kg
Construction height 100 mm
Castors Ø 75 mm

Equipment castors
Article number 9808015300



Set of castors, consisting of 4 swivel castors. 2 castors with brake. Load-bearing capacity of each castor 70 kg.
Construction height 90 mm
Castors Ø 75 mm

Support feet
Article number 9808012900



Vertically adjustable feet (1 set = 4 pieces). Complete with installation material and instructions.

Adjustable construction height approx. 37 - 50 mm

Accessories for control enclosures

CC-3000, CC-4000, CC-4000 SL and CC-5000 *next*

BERNSTEIN not only offers innovative control enclosures that can be perfectly configured to suit your specific requirements with our comprehensive range of accessories that you will find on the following pages but our system solution service also realises complete enclosure solutions.n“.

The range of accessories covers the following areas:

- **Attachment solutions**

Whether suspended, upright or mobile – we have the right system for any configuration.

- **Interface solutions**

With the interfaces laptops, programming devices, diagnostic facilities, modems etc. can be easily connected to built-in components for servicing purposes. Simply open the cover and connect. Protection class IP 65 is retained (cover closed).

- **Keyboard solutions**

Data input devices do not always have to be in the way. We have available excellent solutions for storing such devices and cleverly integrating them in the overall concept while retaining the user-friendly ergonomics of the system.

- **Handle solutions**

The BERNSTEIN range of accessories also includes practical handles to ensure the enclosures are handled safely.

- **Safety solutions**

Your safety is our concern – we therefore offer a range of accessories that help and protect.

- **Heat dissipation solutions**

Heat dissipation is a key problem which we will gladly resolve for you. Take the easy way out and contact us. We have the right enclosures, suitable equipment and the necessary know-how to effectively solve heat dissipation problems.

- **Cable solutions**

It is often necessary to route cables into the enclosure – whether single core or preassembled cables, we have the right solution.

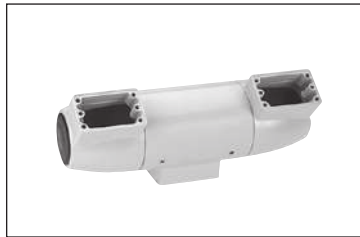
- **Front panel solutions**

The front is the most important side of the enclosure. Here everything must be right and should look exactly as you imagined. Take advantage of our service to help you find the appropriate accessories.

Our comprehensive range of accessories is listed on the following pages.

Article	Console connector kit	Suspended console coupling head	Thin Client wall mount bracket – enclosure attachment
Article number	9806493000	9808013100	9805332000

Attachment solutions



Design	Rigid elements for connecting upper section of console to lower section, set of 2 connectors, finish similar to RAL 9006. Lower section of console, 30° inclination.	Suspended coupling head for all CC-4000 control enclosure suspended console versions attached to a CS-2000 suspension system; hinged keyboard console (infinitely variable from 0° to 30°). Colour RAL 7035. Complete with installation material and instructions	Particularly suitable for mounting an enclosure on safety gate posts that can accept 40, 60 and 80 mm post attachments. The plastic mount is silicone-free. Designed for standard M6 attachment. The maximum load for central mounting is 20 kg. The wall / post attachment, Art. No. 9805333000, is additionally required for a complete system.
--------	--	---	---

Article	Tabletop feet, adjustable	Tabletop feet (StopChoc)	Suspension system covers CS-2000 SL / CS-3000 / CS-3000 neXt	CS-2000 System 80
Article number	9806014000	9806500000	9806495000	9806499000



Design	Simple plastic tabletop feet for control enclosures; feet can be set upright to adjust enclosure inclination. Installation altitude 48 mm Set of 4 pieces	Vibration-absorbing tabletop feet for control enclosures, ideal for mobile use in close proximity to machines or sensitive electronic equipment. Set of 4 pieces	For closing off unused BERNSTEIN suspension system connection points (Couplings). Finish similar to RAL 9006. Other RAL colours available on request. 9806495000 Flange size 60 mm 9806499000 Flange size 80 mm
--------	---	---	---

Article	Carrying handle		
Article number	9806490000		

Handle solutions



Design	Black carrying handle especially for small enclosures in mobile applications.		
--------	---	--	--

Accessories for control enclosures

Article	CC handle	Corner handle set	Positioning handle
Article number	see specification	9806026000	see specification

Handle solutions



Design	<p>Straight, anodised aluminium handle.</p> <p>9808015000 Length 140 mm</p> <p>9808014900 Length 200 mm</p> <p>9808014600 Length 350 mm</p>	<p>2x black foam-coated corner handles.</p>	<p>Anodised, ergonomically designed, formed aluminium positioning handle.</p> <p>9808015100 Length 250 mm</p> <p>9808015200 Length 350 mm</p>
--------	--	---	---

Article	Keyboard shelf	Fold-down keyboard panel	Keyboard drawer 483 x 89 x 155 mm (19"/2HM)
Article number	9806175000	9806488000	9806744000

Keyboard / support solutions



Design	<p>Sheet metal, finish similar to RAL 9006. 2x M5 holes required in enclosure. Stainless steel version available on request.</p> <p>495 x 255 mm</p>	<p>Made from coated sheet steel, finish similar to RAL 9006. Dimensions: 483x249x50 mm. IP54 rating when open.</p>	<p>With mounting pin, no lock, IP65 rating when closed. Including German USB keyboard with integrated trackball. Other language-version keyboards and drawer with lock available.</p>
--------	--	--	---

Article	Keyboard drawer 483 x 134 x 155 mm (19"/3HM) 20° inclination	Keyboard drawer 483 x 89 x 155 mm (19"/2HM) without keyboard	Keyboard drawer 483 x 134 x 155 mm (19"/3HM) 20° inclination without keyboard
Article number	9806745000	9286098000	9286112000



Design	<p>With mounting pin, no lock, IP65 rating when closed. Including German USB keyboard. Other language-version keyboards and drawer with lock available. Keyboard is inclined by 20°.</p>	<p>With mounting pin, no lock, IP65 rating when closed.</p>	<p>With mounting pin, no lock, IP65 rating when closed, without keyboard.</p>
--------	--	---	---

Article	Interface insert		Interface insert
Article number			9421311000

Interface solutions



Design	9421300000 2x USB 2.0 Type A shielded 9421284000 2x USB 2.0 Type A with 0.7 m cable and connector	9421310000 1x Sub-D9 / 1xSub-D25, female / male 9421308000 1x Sub-D9 / 1xSub-D15, female / female	1x RJ45 / USB BF-A / Sub-D9 Other interface inserts on request
--------	--	--	---

Article	Interface insert	Interface flap single	double	RJ-45 interface	USB interface
Article number	9421307000	9421283000	9421306000	9806519000	9421319000



Design	Earthed socket outlet 250V	Metal silver-coloured interface cover, various snap-in inserts for modular configurations. Plastic, transparent version and latching on request. 3 mm two-way key or rotary knob. Dimension: 66 x 120 mm Dimension: 131 x 120 mm		Interfaces with captive dust cap, protection class IP65. Mounted in a 22.5 mm hole in the enclosure or front panel. With connector and cable	
--------	----------------------------	--	--	--	--

Article	Set of spring nuts M4	M5	Mounting brackets	Mounting rail service
Article number	9806006000	9806007000	9806008000	On request

Interior accessories



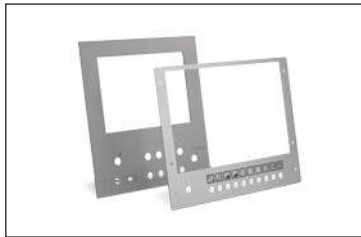
Design	Set of 10	For attaching mounting plates or other built-in components in enclosures. Dimension: 30 x 20 mm for M5 screws	On request we will cut mounting rails to size for your enclosure (TS32 / TS35 for accepting terminal blocks). Please contact us.
--------	-----------	--	--

Accessories for control enclosures

Article	Earthing kit, door and externally mounted front panel	Earthing kit, door and externally mounted front panel	Set of clamping elements (PC477/577/677)
Article number	9806507000	9806506000	9806324000
			
Design	Copper strap	Additional earthing kit for earthing externally mounted front panels or doors (green / yellow).	Set of 6 clamping elements for direct installation of Siemens Simatic Panel PC 477/577/677
Article	Front panel seal	Front panel mounting kit CC-3000 / CC-4000	Front panel mounting kit CC-5000 neXt
Article number	9806373000	9806508000	9806893000
			
Design	2 m front panel flat seal, 6 x 2 mm, grey	For internal / external mounting of the front panel 10 mounting elements	For internal fixing of the front panel 10 mounting elements
Article	Door arrester		
Article number	9806503000		
			
Design	For locking door inn open position and for limiting opening range (approx.100°) for CC-3000 / CC-4000.		

Article	Front panel preparation service	Crystal clear makrolon front cover	TFT monitor mounting bracket
Article number	on request	on request	9806679000

Machining service / special solutions



Design	We machine aluminium front and rear panels individually to suit your specific requirements. Engraving or various printing processes also possible on request. Simply provide us with a drawing with your requirements.	Please contact us regarding the protection of a commercially available monitor that is secured in the enclosure by means of a TFT monitor mounting bracket.	Commercially available displays can be easily secured in modern control enclosures, thus encapsulating them in a way that meets industrial standards. For display, pivotable with Vesa adapters 75 or 100 (15" to 20").
--------	--	---	--

Article	Fan mounting bracket set	Filter fan set PF1000	Air conditioner 230 V, 320 W, L35L35	230 V, 400 W, L35L35
Article number	9806491000	9806492000	9421279000	9421276000

Heat dissipation solutions



Design	Set of 2 brackets for axial or radial fan, RAL 7035.	230 V filter fan + outlet filter 24 m³/h, IP54 Dimension: 109 x 109 x 49/19 mm 1 pc per unit 12 V / 24 V / 48 V on request	9421279000 270 x 520 x 110 mm, 13.3 kg 9421276000 520 x 340 x 110 mm, 14.8 kg further cooling capacities on request	
--------	--	---	---	--

BERNSTEIN Services

New system integration approaches such as the installation and preassembly of:

- Power supply systems
- Operating and control elements
- Membrane keypads
- Displays, power supply and data cables
- I/O assemblies
- Ethernet components
- PLC/IPC solutions of all renowned manufacturers

Services:

- Wiring
- Worked-out circuit diagram
- Installation of components
- Acceptance test